



SRPMIC

EARLY CHILDHOOD EDUCATION CENTER

BUILDING UPDATE

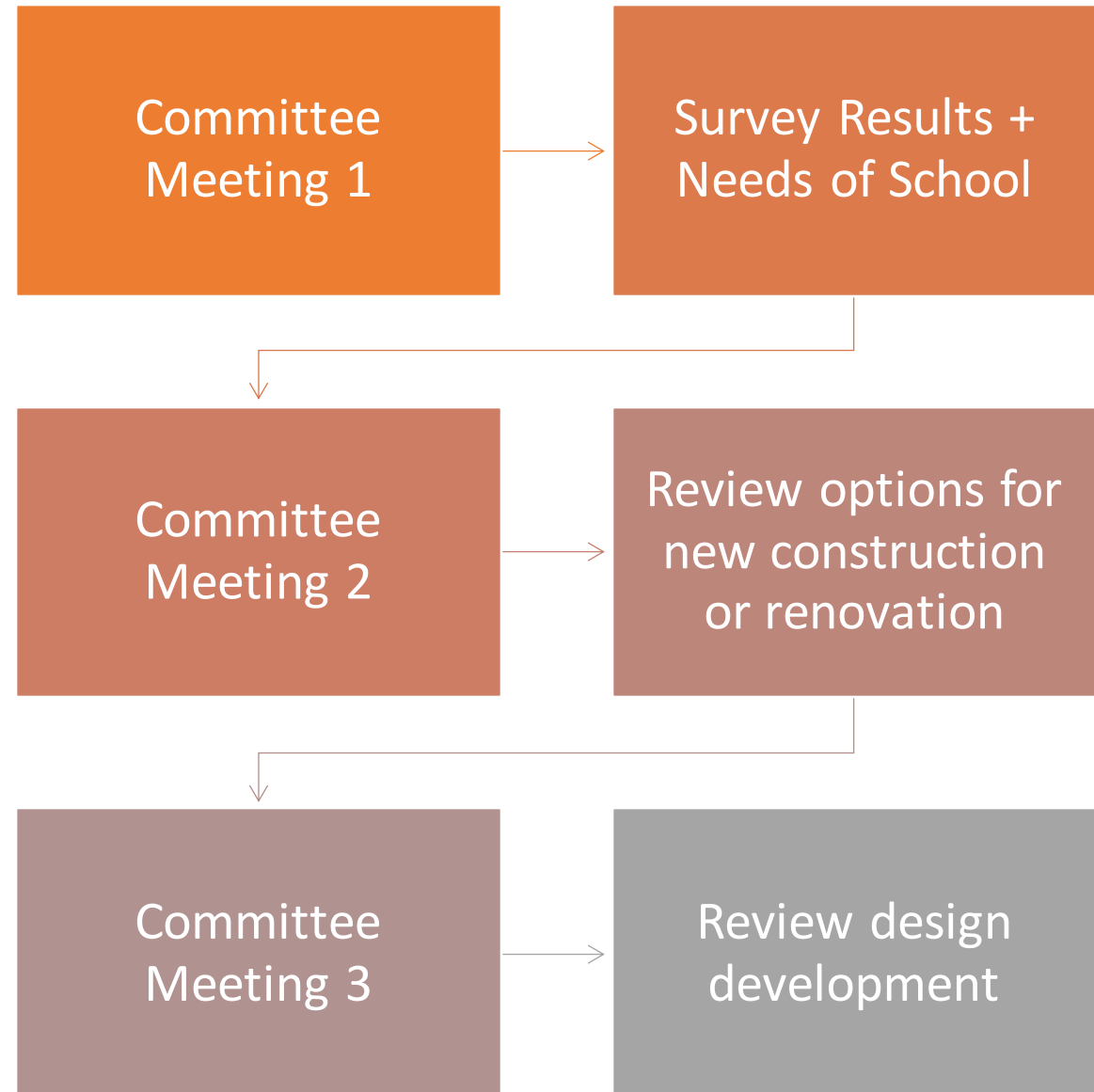
07.06.22

 **DLRGROUP**

Construction Committee

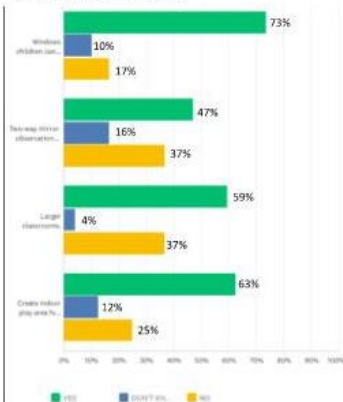
Committee Goals:
Masterplan Current and
Future Needs of the school

Project Goals:
1. Increase Services for
Children
2. Increase Services for
Guardians
3. Recruit and retain a
highly effective work force.

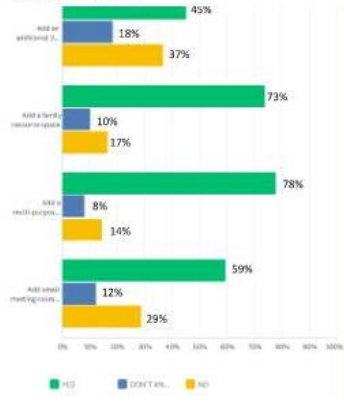


COMMUNITY SURVEY RESULTS

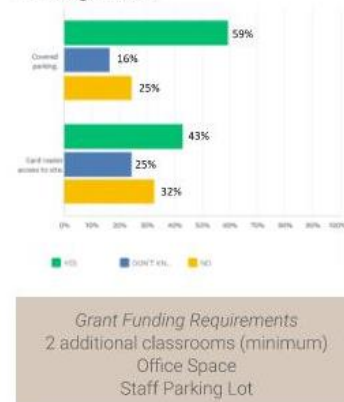
Classroom Needs



Office Needs



Parking Needs



Grant Funding Requirements
2 additional classrooms (minimum)
Office Space
Staff Parking Lot

Inviting
child safety

Community focus
protected views

Comfortable
unified design

cooling + shade



Existing Site Analysis



Indoor Play Inspiration



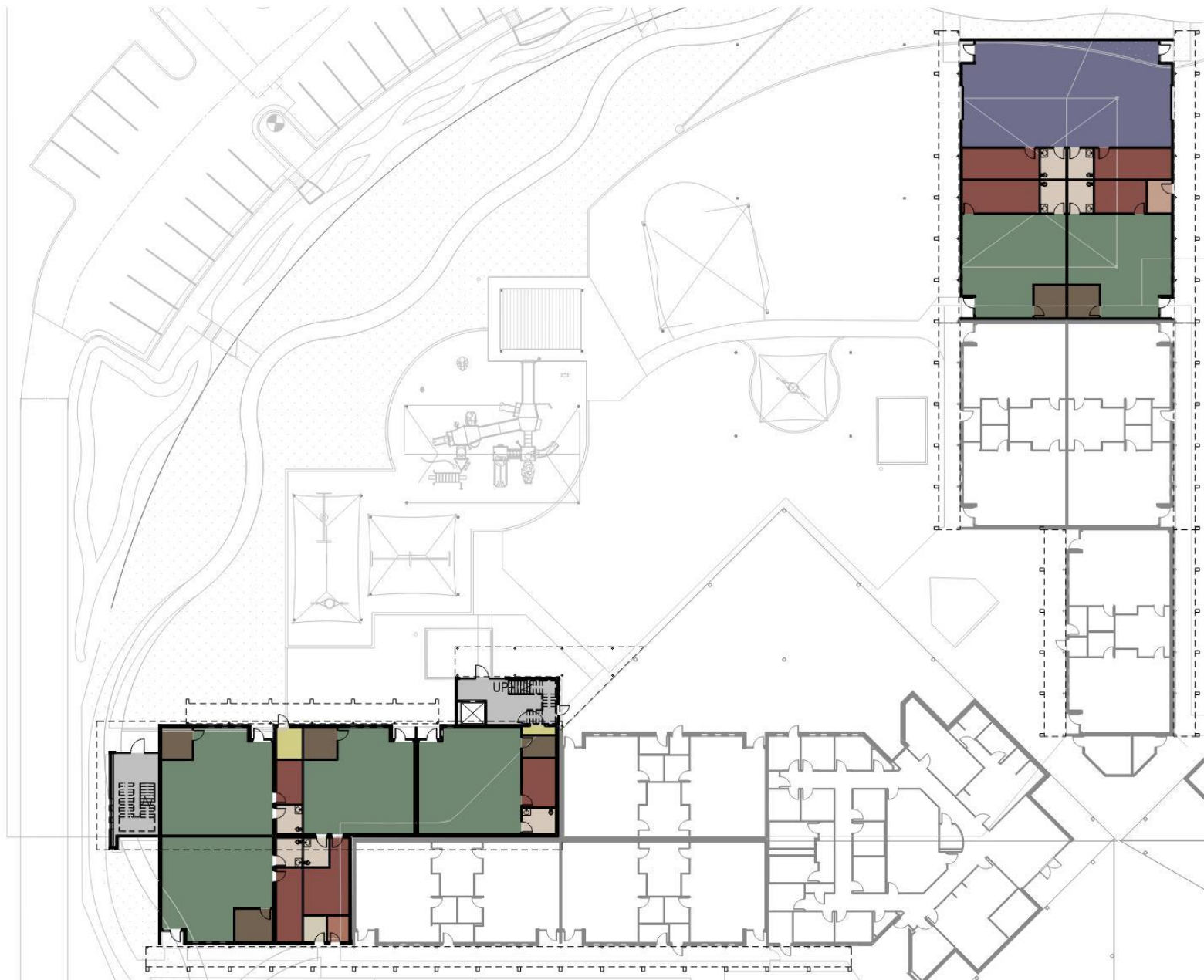
Unified Design with Existing



[illegible]

- 2-story gives most potential office area
- separates administrations spaces
- Phase 1 – 1 construction area
- removed PD space
- Multi-Purpose – future adaptability for classrooms.

Access to both west and east playgrounds.

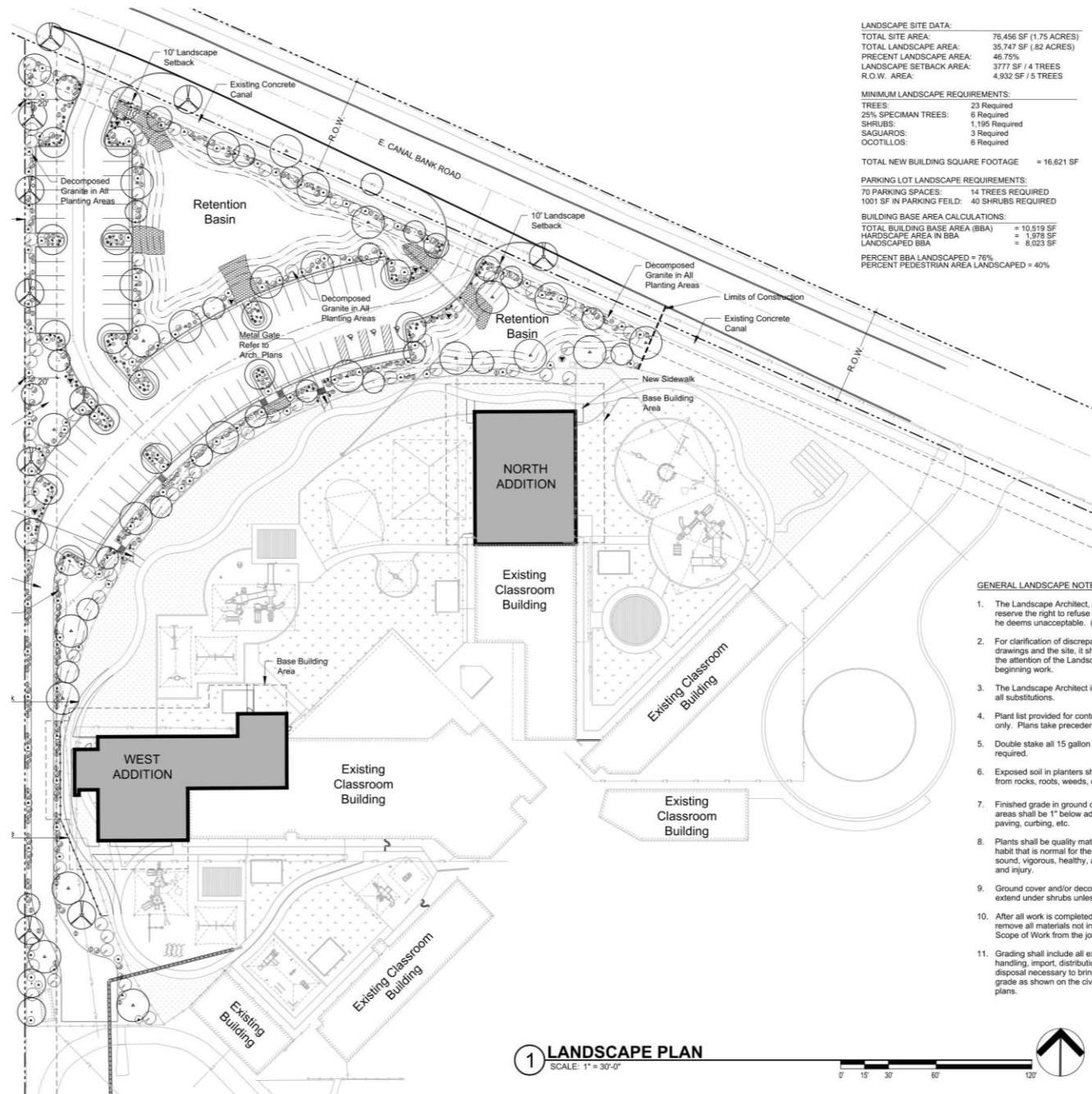


- CLASSROOM
- ELECTRICAL
- ELEVATOR
- FIRE RISER
- IDF
- LAUNDRY
- MULTI-PURPOSE ROOM
- OFFICE
- RR
- STAIR
- STORAGE



SITE DESIGN DEVELOPMENT

70 PARKING SPACES SHOWN



LANDSCAPE SITE DATA:
TOTAL SITE AREA: 76,456 SF (1.75 ACRES)
TOTAL LANDSCAPE AREA: 35,747 SF (82 ACRES)
PRECENT LANDSCAPE AREA: 46.75%
LANDSCAPE SETBACK AREA: 3777 SF / 4 TREES
R.O.W. AREA: 4,932 SF / 5 TREES

MINIMUM LANDSCAPE REQUIREMENTS:
TREES: 23 Required
25% SPECIMAN TREES: 6 Required
SHRUBS: 1,195 Required
SAGUARIOS: 3 Required
OCOTILLOS: 6 Required

TOTAL NEW BUILDING SQUARE FOOTAGE = 16,621 SF

PARKING LOT LANDSCAPE REQUIREMENTS:
70 PARKING SPACES: 14 TREES REQUIRED
1001 SF IN PARKING FIELD: 40 SHRUBS REQUIRED

BUILDING BASE AREA CALCULATIONS:
TOTAL BUILDING BASE AREA (BBA) = 10,519 SF
HARDSCAPE AREA IN BBA = 1,978 SF
LANDSCAPED BBA = 8,541 SF

PERCENT BBA LANDSCAPED = 75%
PERCENT PEDESTRIAN AREA LANDSCAPED = 40%

LANDSCAPE LEGEND

Supply and install the following plant material.
Landscape designer to field verify location prior to
planting. All plant material to meet A.N.A.
specifications and be of sound health and appearance



TREES	SIZE
Cercidium microphyllum	Standard
Footfall Palo Verde	30" Box
Prosopis juliflora	Standard
Native Mesquite	30" Box
Acacia farnesiana	Multi
Savill Acacia	24" Box
Callis reticulata	Standard
Netleaf Hackberry	24" Box
Parkinsonia praecox	Standard
Palo Verde	30" Box
Chilopsis linearis	Multi
Desert Willow	24" Box
Prosopis glandulosa v. torreyana	Standard
Western Honey Mesquite	30" Box

SHRUBS/ACCENTS	SIZE
Larrea tridentata (divaricata)	5 Gallon
Crotona Bush	5 Gallon
Buddleia Mammoth	5 Gallon
Woolly Butterfly Bush	5 Gallon
Calliandra eriophylla	5 Gallon
Fairy Duster	5 Gallon
Ercecia formosa	5 Gallon
Bittersweet	5 Gallon
Ephedra aspera	5 Gallon
Mormon Tea	5 Gallon
Dalea pulchra	5 Gallon
Bush Dalea	5 Gallon
Muhlenbergia capillaris	1 Gallon
Pink Muhly	1 Gallon
Chrysanthemum mexicanum	1 Gallon
Damianita	1 Gallon
Penstemon pseudospectabilis	1 Gallon
Arizona Penstemon	1 Gallon
Salvia clevelandia	1 Gallon
Cleveland Sage	1 Gallon
Melampodium leucanthum	1 Gallon
Angelita's Daisy	1 Gallon
Penstemon parryi	1 Gallon
Parry's Penstemon	1 Gallon
Gaillardia aristata	1 Gallon
Arizona Blanket Flower	1 Gallon

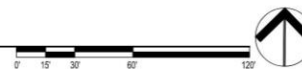
CACTI	SIZE
Carnegiea gigantea	12'-0" Tall
Saguaro	12'-0" Tall
Fourchuria splendens	5 Gallon
Octobello	5 Gallon
Agave palmeri	5 Gallon
Palmer's Agave	5 Gallon

GROUND COVER/ HARDSCAPE MATERIAL
Decomposed Granite - 1/2" Screened - Apache Gold
or approved equal. 3" in planting areas as noted.

GENERAL LANDSCAPE NOTES:

- The Landscape Architect, or his representative, reserve the right to refuse any plant materials he deems unacceptable. (See specifications)
- For clarification of discrepancies between the drawings and the site, it should be brought to the attention of the Landscape Architect prior to beginning work.
- The Landscape Architect is to approve any and all substitutions.
- Plant list provided for contractor's convenience only. Plans take precedence.
- Double stake all 15 gallon and 24" box trees as required.
- Exposed soil in planters shall be raked and free from rocks, roots, weeds, etc.
- Finished grade in ground cover and granite areas shall be 1" below adjacent header board, paving, curbing, etc.
- Plants shall be quality material having a growth habit that is normal for the species and be sound, vigorous, healthy, and free from insects and injury.
- Ground cover and/or decomposed granite shall extend under shrubs unless noted.
- After all work is completed, the contractor shall remove all materials not incorporated in the Scope of Work from the job site.
- Grading shall include all excavation, settlement, handling, import, distribution, transportation, and disposal necessary to bring ground to finish grade as shown on the civil and landscape plans.
- All earthwork is to be done so that all water drains away from all structures.
- All underground conduits and utilities are to be located before digging. Call ARIZONA BLUESTAKE, in Maricopa County 602.263.1100.
- All plant material to be guaranteed for a period of eighteen (18) months after final acceptance.
- Landscape Contractor is responsible for final grading on all landscaped areas.
- Backfill planting soil for all native species, cacti and succulents to be existing native soil. A planting mix of 1/3 mulch, 2/3 native soil mixed thoroughly is to be used as plant backfill for non-native or exotic species.
- In the event of major discrepancies between the plans and field conditions, contractor shall notify the Landscape Architect immediately. Allow a minimum of forty-eight (48) hours between notification of Landscape Architect and proceeding with construction of irrigation system.
- All finished granite areas are to be 1" below all sidewalks and curbs.
- Test drainage of plant beds and pits by filling with water. Conditions permitting the retention of water in locations for more than twenty-four (24) hours shall be brought to the attention of the LA prior to any planting.
- Contractor is responsible for providing sleeves to all landscape areas regardless whether they are shown on plans or not. Refer to sleeving schedule for size and quantity. If doubt or discrepancy exists request clarification from LA in writing.
- Refer to Specifications for Plants that are considered to be invasive and should NOT be utilized on this project.

1 LANDSCAPE PLAN
SCALE: 1" = 30'-0"



SHEET KEY

- L1.1 LANDSCAPE PLAN
- L1.2 HARDSCAPE PLAN
- L3.1 DETAILS
- L3.2 DETAILS
- L3.3 DETAILS
- L3.4 DETAILS

S
S
C
I
E
N
C
I
P
I
U
48
Sc

25
Proj

PI
L
SI

REVI
Re
Nu

PI
PI

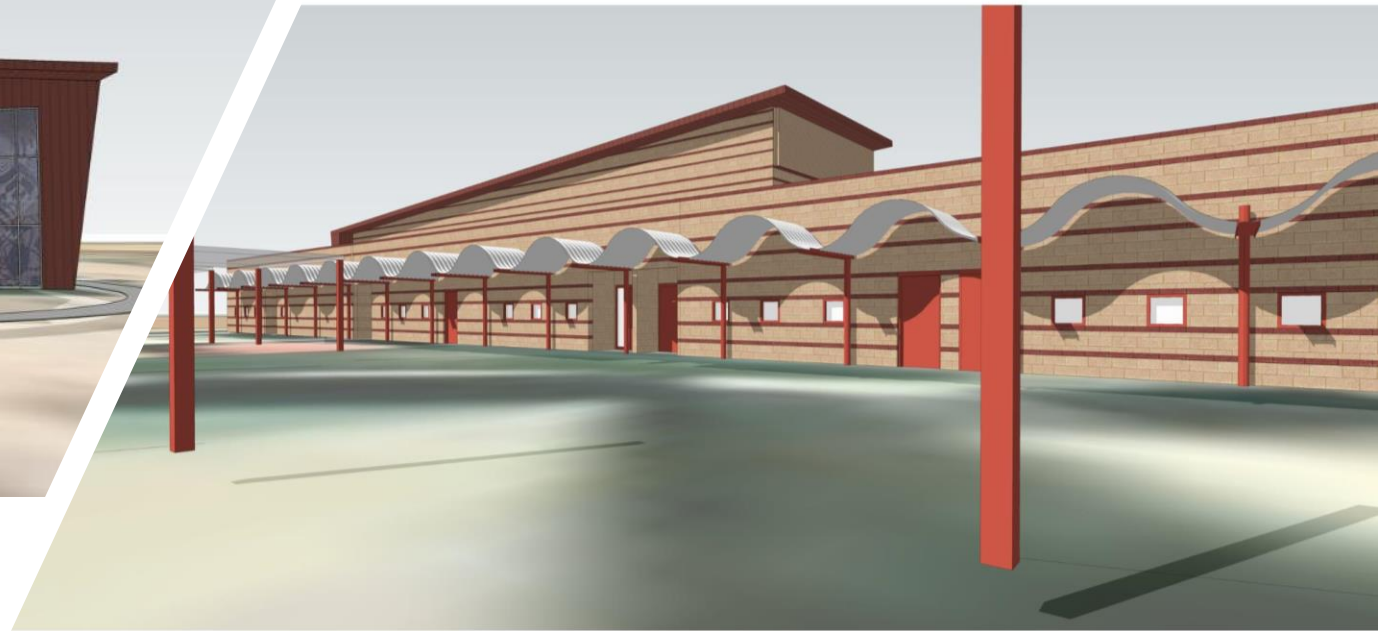
Dra
© Cig

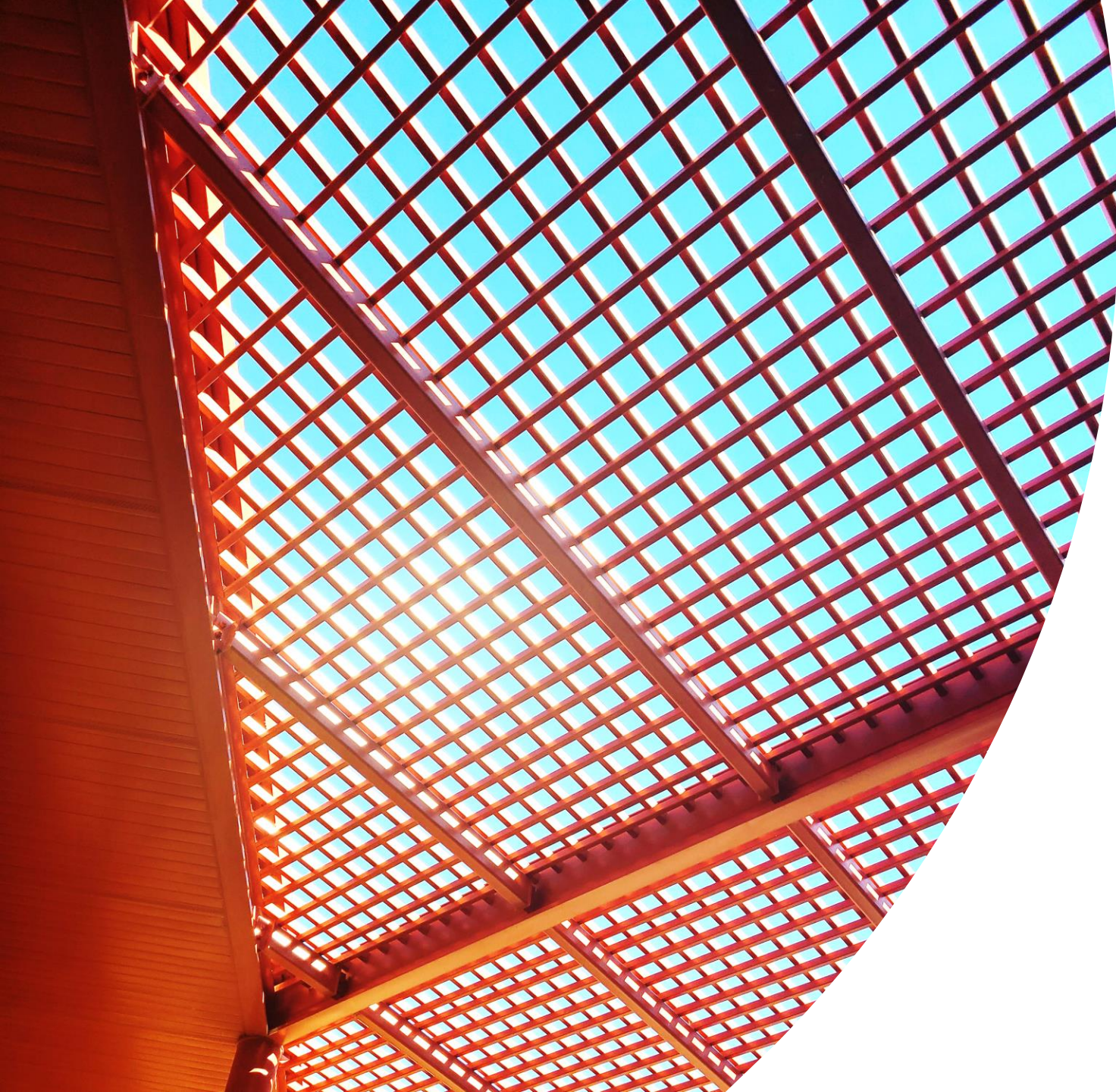


Building
Additions to
blend with
existing
campus

Balance –
maximize
classroom
space







THANK YOU!